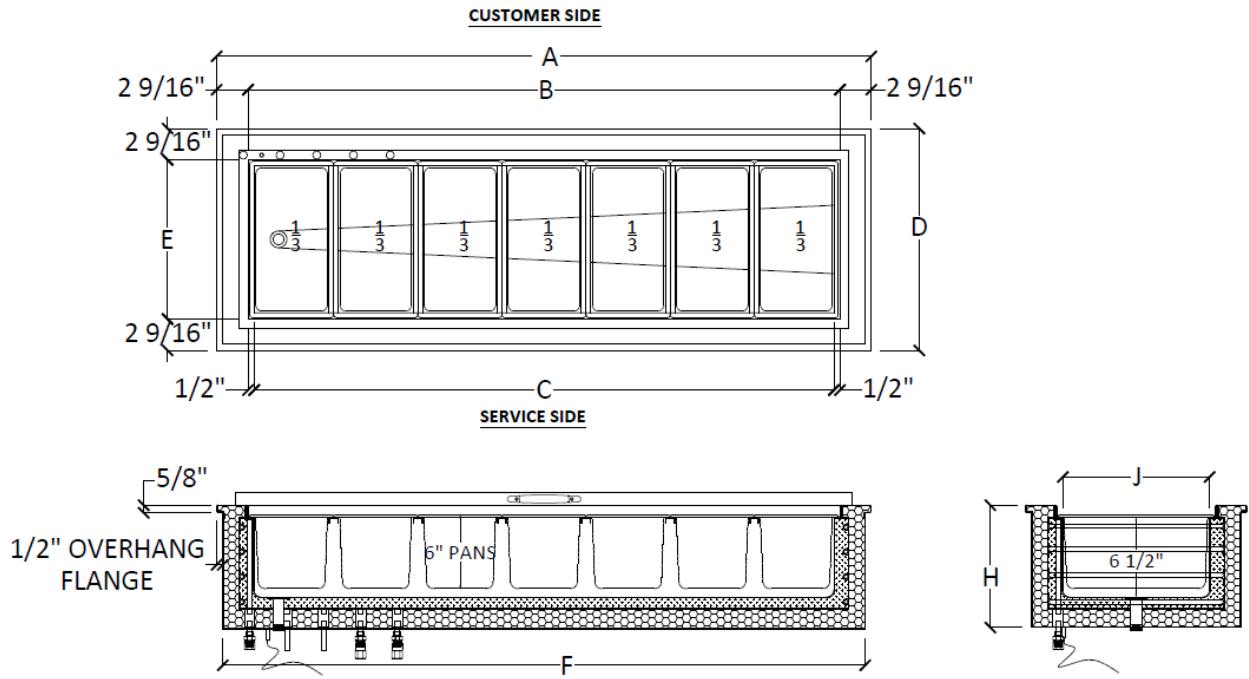


Sizing by Model for Remote Pan Chiller



Product to be pre-chilled to a minimum of 38°F prior to use in this equipment holding cabinet. Six inch deep prep pans recommended for optimum performance.

Physical & Dimensional Data

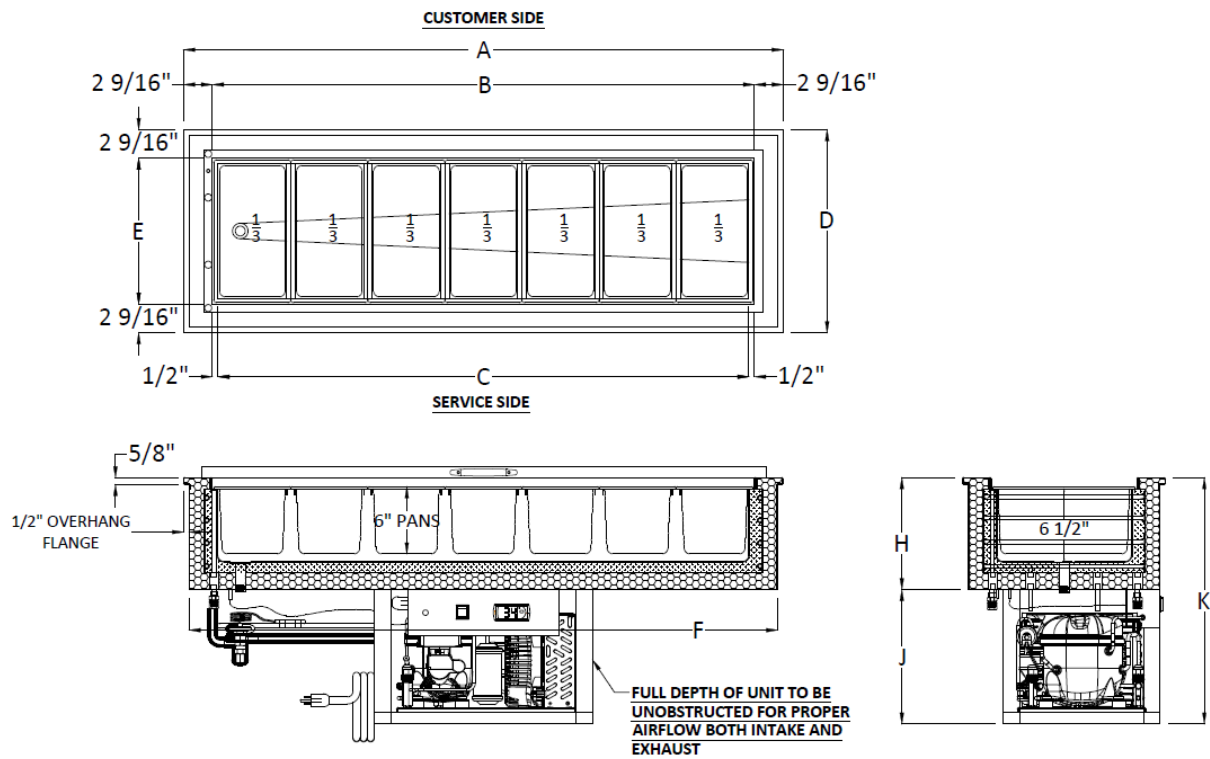
Model No.	Dimensions (in.)								1/3 Pans Capacity	Counter Cutout Dimensions (in.)
	A	B	C	D	E	F	H	J		
TCGD-26-SC	26	20 7/8	19 7/8	18 1/8	13	25	10	12	3	25 1/4 x 17.3/8
TCGD-32-SC	32 7/8	27 3/4	26 3/4	18 1/8	13	31 7/8	10	12	4	32 1/8 x 17.3/8
TCGD-39-SC	39 3/4	34 5/8	33 5/8	18 1/8	13	38 3/4	10	12	5	39 x 17.3/8
TCGD-46-SC	46 5/8	41 1/2	40 1/2	18 1/8	13	45 5/8	10	12	6	45 7/8 x 17.3/8
TCGD-53-SC	53 1/2	48 3/8	47 3/8	18 1/8	13	52 1/2	10	12	7	52 3/4 x 17.3/8
TCGD-60-SC	60 3/8	55 1/4	54 1/4	18 1/8	13	59 3/8	10	12	8	59 5/8 x 17.3/8
TCGD-67-SC	67 1/4	62 1/8	61 1/8	18 1/8	13	66 1/4	10	12	9	66 1/2 x 17.3/8
TCGD-74-SC	74 1/8	69	68	18 1/8	13	73 1/8	10	12	10	73 3/8 x 17.3/8
TCGD-81-SC	81	75 7/8	74 7/8	18 1/8	13	73 1/8	10	12	11	80 1/4 x 17.3/8
TCGD-87-SC	87 7/8	82 3/4	81 3/4	18 1/8	13	86 7/8	10	12	12	87 1/8 x 17.3/8
TCGD-94-SC	94 3/4	89 5/8	88 5/8	18 1/8	13	86 7/8	10	12	13	94 x 17.3/8

• Due to Continuing Engineering Improvements, Specifications are subject to change without notice.

INSTALLATION REQUIREMENTS

1. Refrigerated Glycol Drop In Holding Pans Must be installed in accordance with local codes
2. Following installation, ventilation and wall clearance requirements for the equipment supporting the drop in pans for remote applications
3. Fill depth of unit to be unobstructed for proper air flow for both intake and exhaust
 - Self Contained Requirements:
 1. Separate fresh air intake and heated air exhaust venting is required in the cabinet
 2. Heated air exhaust must not mix with the fresh air intake

Sizing by Model for Self Contained Pan Chiller



Product to be pre-chilled to a minimum of 38°F prior to use in this equipment holding cabinet. Six inch deep prep pans recommended for optimum performance.

Physical & Dimensional Data											
Model No.	Dimensions (in.)									1/3 Pans Capacity	Counter Cutout Dimensions (in.)
	A	B	C	D	E	F	H	J	K		
TCGD-26-SC	26	20 7/8	19 7/8	18 1/8	13	25	10	12	22	3	25 1/4 x 17.3/8
TCGD-32-SC	32 7/8	27 3/4	26 3/4	18 1/8	13	31 7/8	10	12	22	4	32 1/8 x 17.3/8
TCGD-39-SC	39 3/4	34 5/8	33 5/8	18 1/8	13	38 3/4	10	12	22	5	39 x 17.3/8
TCGD-46-SC	46 5/8	41 1/2	40 1/2	18 1/8	13	45 5/8	10	12	22	6	45 7/8 x 17.3/8
TCGD-53-SC	53 1/2	48 3/8	47 3/8	18 1/8	13	52 1/2	10	12	22	7	52 3/4 x 17.3/8
TCGD-60-SC	60 3/8	55 1/4	54 1/4	18 1/8	13	59 3/8	10	12	22	8	59 5/8 x 17.3/8
TCGD-67-SC	67 1/4	62 1/8	61 1/8	18 1/8	13	66 1/4	10	12	22	9	66 1/2 x 17.3/8
TCGD-74-SC	74 1/8	69	68	18 1/8	13	73 1/8	10	12	22	10	73 3/8 x 17.3/8
TCGD-81-SC	81	75 7/8	74 7/8	18 1/8	13	73 1/8	10	14	24	11	80 1/4 x 17.3/8
TCGD-87-SC	87 7/8	82 3/4	81 3/4	18 1/8	13	86 7/8	10	14	24	12	87 1/8 x 17.3/8
TCGD-94-SC	94 3/4	89 5/8	88 5/8	18 1/8	13	86 7/8	10	14	24	13	94 x 17.3/8

Electrical Requirements						
Model No.	Dimensions (in.)					
	HP	Voltage	Phase	Amps	NEMA Plug	BTU'S
TCGD-26-SC	1/4	115	1	5.1	5-15P	358
TCGD-32-SC	1/4	115	1	5.1	5-15P	486
TCGD-39-SC	1/4	115	1	5.1	5-15P	605
TCGD-46-SC	1/3	115	1	6.3	5-15P	729
TCGD-53-SC	1/3	115	1	6.3	5-15P	853
TCGD-60-SC	1/3	115	1	6.3	5-15P	976
TCGD-67-SC	1/3	115	1	6.3	5-15P	1,098
TCGD-74-SC	1/3	115	1	6.3	5-15P	1,224
TCGD-81-SC	1/2	115	1	9.2	5-15P	1,347
TCGD-87-SC	1/2	115	1	9.2	5-15P	1,471
TCGD-94-SC	1/2	115	1	9.2	5-15P	1,595

• Due to Continuing Engineering Improvements, Specifications are subject to change without notice.

INSTALLATION REQUIREMENTS

1. Refrigerated Glycol Drop In Holding Pans Must be installed in accordance with local codes
2. Following installation, ventilation and wall clearance requirements for the equipment supporting the drop in pans for remote applications
3. Fill depth of unit to be unobstructed for proper air flow for both intake and exhaust
Self Contained Requirements:
 1. Separate fresh air intake and heated air exhaust venting is required in the cabinet
 2. Heated air exhaust must not mix with the fresh air intake